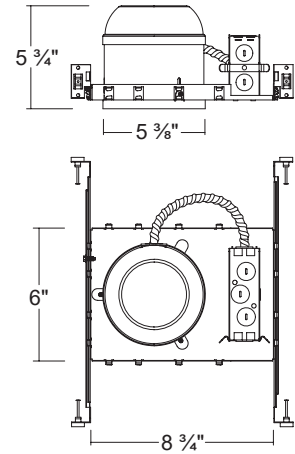


H500S

5" Non-IC Air-Tight Incandescent Shallow New construction Housing (Max. 75W)



Dimensions



ORDERING INFORMATION

Model No.	Description
H500S	5" Non-IC Air-Tight Incandescent Shallow New construction Housing (Max. 75W)

SPECIFICATION

Plaster Frame

- Galvanized steel construction. The housing can be removed from plaster frame to provide access to the junction box

Junction Box

- Listed for through branch circuit wiring
- Contains seven 7/8" knockouts and four Romex pryouts with strain relief

Bar Hanger

- Pre-installed Real nail easily installs in regular lumber, engineered lumber
- Bar Hangers are adjustable from 13-5/8" to 25" and can be repositioned 90 degree on plaster frame

Thermal Protector

- Self resetting thermal protector deactivates fixture if overheating occurs due to improper lamping or misapplied insulation.

Listings

- cULus Listed for Damp Location
- cULus Listed for Feed Through

COMPATIBLE TRIMS

T500 Eyeball



- **Incandescent**
75W BR / Par30

T509 Albalite Shower



- **Incandescent**
40W A19
50W R / Par20

T513W AT Cone Baffle



- **Incandescent**
75W BR / Par30

T516 Dome Shower



- **Incandescent**
40W A19
50W R / Par20

T508 Fresnel Shower



- **Incandescent**
40W A19
50W R / Par20

